

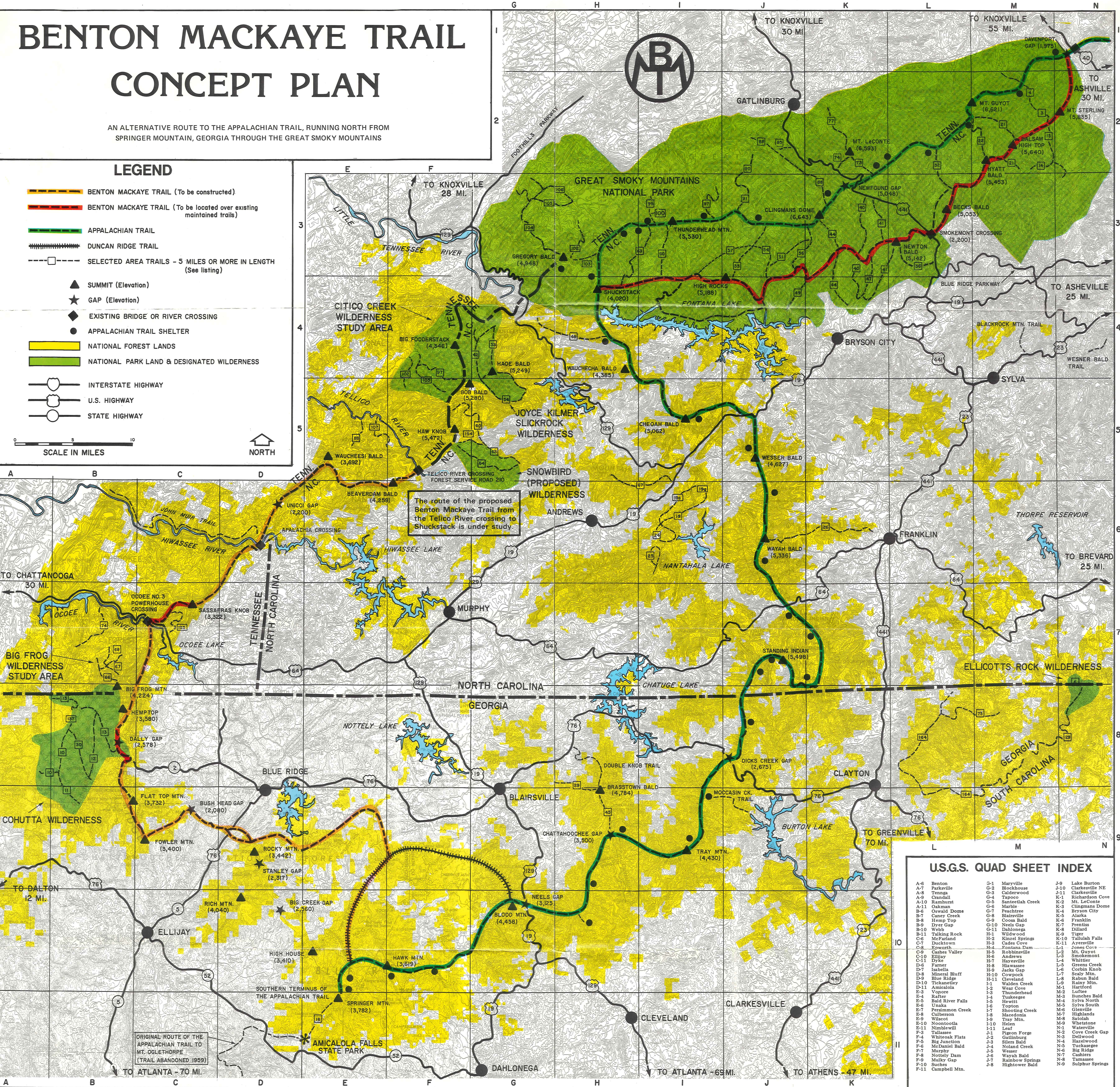
BENTON MACKAYE TRAIL CONCEPT PLAN

AN ALTERNATIVE ROUTE TO THE APPALACHIAN TRAIL, RUNNING NORTH FROM SPRINGER MOUNTAIN, GEORGIA THROUGH THE GREAT SMOKY MOUNTAINS

LEGEND

- BENTON MACKAYE TRAIL (To be constructed)
- BENTON MACKAYE TRAIL (To be located over existing maintained trails)
- APPALACHIAN TRAIL
- DUNCAN RIDGE TRAIL
- SELECTED AREA TRAILS - 5 MILES OR MORE IN LENGTH (See listing)
- SUMMIT (Elevation)
- GAP (Elevation)
- EXISTING BRIDGE OR RIVER CROSSING
- APPALACHIAN TRAIL SHELTER
- NATIONAL FOREST LANDS
- NATIONAL PARK LAND & DESIGNATED WILDERNESS
- INTERSTATE HIGHWAY
- U.S. HIGHWAY
- STATE HIGHWAY

SCALE IN MILES



The route of the proposed Benton Mackaye Trail from the Tellico River crossing to Shuckstack is under study.

U.S.G.S. QUAD SHEET INDEX

A-6 Benton	G-1 Maryville	J-9 Lake Burton
A-7 Parksville	G-2 Blockhouse	J-10 Clarksville NE
A-8 Tanna	G-3 Calderwood	J-11 Clarksville SE
A-9 Candall	G-4 Toccoa	K-1 Richardson Cove
A-10 Ramhurst	G-5 Santeeah Creek	K-2 Mt. LeConte
A-11 Oakman	G-6 Marble	K-3 Clingmans Dome
B-6 Oswald Dome	G-7 Peachtree	K-4 Bryson City
B-7 Caney Creek	G-8 Blairville	K-5 Alarka
B-8 Humpy Top	G-9 Coosa Bald	K-6 Franklin
B-9 Dyer Gap	G-10 Neels Gap	K-7 Prentiss
B-10 Webb	G-11 Dahlonega	K-8 Whittier
B-11 Talking Rock	H-1 Wildwood	K-9 Tiger
C-6 McFarland	H-2 Kinzel Springs	K-10 Tallulah Falls
C-7 Ducktown	H-3 Cades Cove	K-11 Ayresville
C-8 Eoworth	H-4 Fontana Dam	L-1 Jones Cove
C-9 Cash Valley	H-5 Robbinsville	L-2 Smokemont
C-10 Ellijay	H-6 Andrews	L-3 Whittier
C-11 Dyke	H-7 Haystack	L-4 Greens Creek
D-6 Fanner	H-8 Hiwassee	L-5 Greens Creek
D-7 Isabella	H-9 Jacks Gap	L-6 Corbin Knob
D-8 Mineral Bluff	H-10 Cowrock	L-7 Rabun Bald
D-9 Blue Ridge	H-11 Cleveland	L-8 Rabun Mtn.
D-10 Toccoa	I-1 Walden Creek	L-9 Highlands
D-11 Amicalola	I-2 Wear Cove	M-1 Hartford
E-4 Vonore	I-3 Thunderhead	M-2 Laffee
E-5 Bald River Falls	I-4 Tuskegee	M-3 Bunches Bald
E-6 Unaka	I-5 Hewitt	M-4 Sylva North
E-7 Persimmon Creek	I-6 Tipton	M-5 Sylva South
E-8 Cullberson	I-7 Shooting Creek	M-6 Greenville
E-9 Wilcox	I-8 Macdonia	M-7 Highlands
E-10 Noontoola	I-9 Tray Mtn.	M-8 Satolah
E-11 Nimbirell	I-10 Helen	M-9 Whetstone
F-3 Tallasse	I-11 Leaf	N-1 Cove Creek Gap
F-4 Bellows Falls	J-1 Pigeon Forge	N-2 Bellows Falls
F-5 Big Junction	J-2 Sillers Bald	N-3 Hazelwood
F-6 McDaniel Gap	J-3 Noland Creek	N-4 Big Ridge
F-7 Mulkey Gap	J-4 Hazel Creek	N-5 Cashiers
F-8 Nottely Dam	J-5 Rabbit Ridge	N-6 Tamassee
F-9 Suches	J-6 Rainbow Springs	N-7 Tamassee
F-10 Suches	J-7 Hightower Bald	N-8 Sulphur Springs
F-11 Campbell Mtn.	J-8 Hightower Bald	N-9 Sulphur Springs

SELECTED AREA TRAILS (5 MILES OR MORE IN LENGTH)

Chattahoochee National Forest - Georgia		
U.S.F.S. Trail No.	Name	Ranger District/Map Location
10	Hickory Creek	Cohutta/B-8
11	Conasauga River	Cohutta/B-9
12	Rough Ridge	Cohutta/B-8
13	Jacks River	Cohutta/B-8
16	Approach to the Appalachian Trail	Toccoa/E-11
29	Arkagash	Brasstown/H-8
30	East Cowpan	Cohutta/B-8
45	Jacks Knob	Brasstown/H-9
75	Three Forks	Tallulah/M-8
137	Rice Camp	Cohutta/B-8
164	Bartram National Recreation	Tallulah/L-8
165	Rich Mountain	Toccoa/D-9
-----	Double Knob	Brasstown/H-8
-----	Moccasin Creek	Chattooga/J-9

Cherokee National Forest - Tennessee		
U.S.F.S. Trail No.	Name	Ranger District/Map Location
65	Licklog	Ocoee/C-7
66	Wolf Ridge	Ocoee/B-7
67	Barkleppin	Ocoee/B-7
68	Big Creek	Ocoee/B-7
74	Caney Creek	Ocoee/B-7
88	Bald River	Tellico/E-5
97	Brush Mountain	Tellico/F-4
102	Flats Mountain	Tellico/F-4
105	South Fork Citico	Tellico/F-5
107	Henderson Mountain	Tellico/E-5
125	Rock Creek	Ocoee/C-7
-----	John Muir	Hiwassee/C-6

Nantahala National Forest - North Carolina		
U.S.F.S. Trail No.	Name	Ranger District/Map Location
6	Ellicotts Rock	Highland/N-7
19	Junaluska	Wayah/I-6
19C	London Bald	Wayah/I-6
19G	Nantahala	Wayah/I-6
24	Choga	Wayah/I-6
25	Tusquehee Bald	Tusquehee/I-6
26	Trimont	Wayah/K-6
42	Slickrock Creek	Cheoah/G-4
48	Yellow Creek Mountain	Cheoah/H-4
53	Hoe	Cheoah/G-5
54	Stratton Bald	Cheoah/G-5
60	Hooper Bald	Cheoah/G-5
63	Kings Meadow	Cheoah/G-5
64	Big Snowbird	Cheoah/G-5
67	Snowbird Mountain	Cheoah/I-6
154	Laurel Top	Cheoah/F-5

North Carolina Trails Outside the National Forest		
Name	Map Location	Trail No.**
Blackrock Mountain	M-4	3
Wesner Bald	M-4	4
Low Gap	M-2	14
Palmer Creek	M-2	15
Pretty Hollow Gap	M-2	21
Balsam Mountain	M-2	25
Hyatt Ridge	M-2	32
Hughes Ridge	L-2	38
Mingus Creek	L-3	40
Deep Creek	K-3	42
Thomas Divide	K-3	44
Noland Divide	K-3	47
Indian Creek	K-4	51
Noland Creek	J-3	59
Forney Ridge	J-3	57
Hazel Creek	J-3	57
Jenkins Ridge	J-3	60
Eagle Creek	I-3	63

Great Smoky Mountains National Park		
Name	Map Location	Trail No.**
73	Boulevard	K-2
74	Alum Cave	K-2
77	Trillium Gap	M-2
85	Huskey Gap	J-2
88	Sugarland Mountain	J-2
90	Blanket Mountain	J-2
91	Miry Ridge	J-3
97	Greenbrier Ridge	I-3
99	Bore Mountain Road	I-3
100	Anthony Creek	I-3
102	Gregory Ridge	H-3
103	Gregory Bald	H-3
104	Hannah Mountain	G-3
105	Rabbit Creek	G-3
106	Abrams Falls	H-3

Sumter National Forest - South Carolina		
U.S.F.S. Trail No.	Name	Ranger District/Map Location
29	Chattooga River	Andrew Pickens/N-8

